

Prof. Ms. Thiago Blanco Vieira

Psiquiatra da Infância e Adolescência

Faculdade de Medicina | Escola Superior de Ciências da Saúde



1933



Declaro nenhum conflito de interesse.

financeiro	pessoal	acadêmico	afiliação institucional	político	moral	religioso
-	-	-	-	-	-	-

Diagnóstico Diferencial

autismo

x

transtorno afetivo bipolar

x

esquizofrenia

Sexo masculino (SAMSHA, 2014)

Exposição a eventos traumáticos (Dube et al, 2006)

Exposição prenatal a álcool e outras drogas (Enoch, 2011)

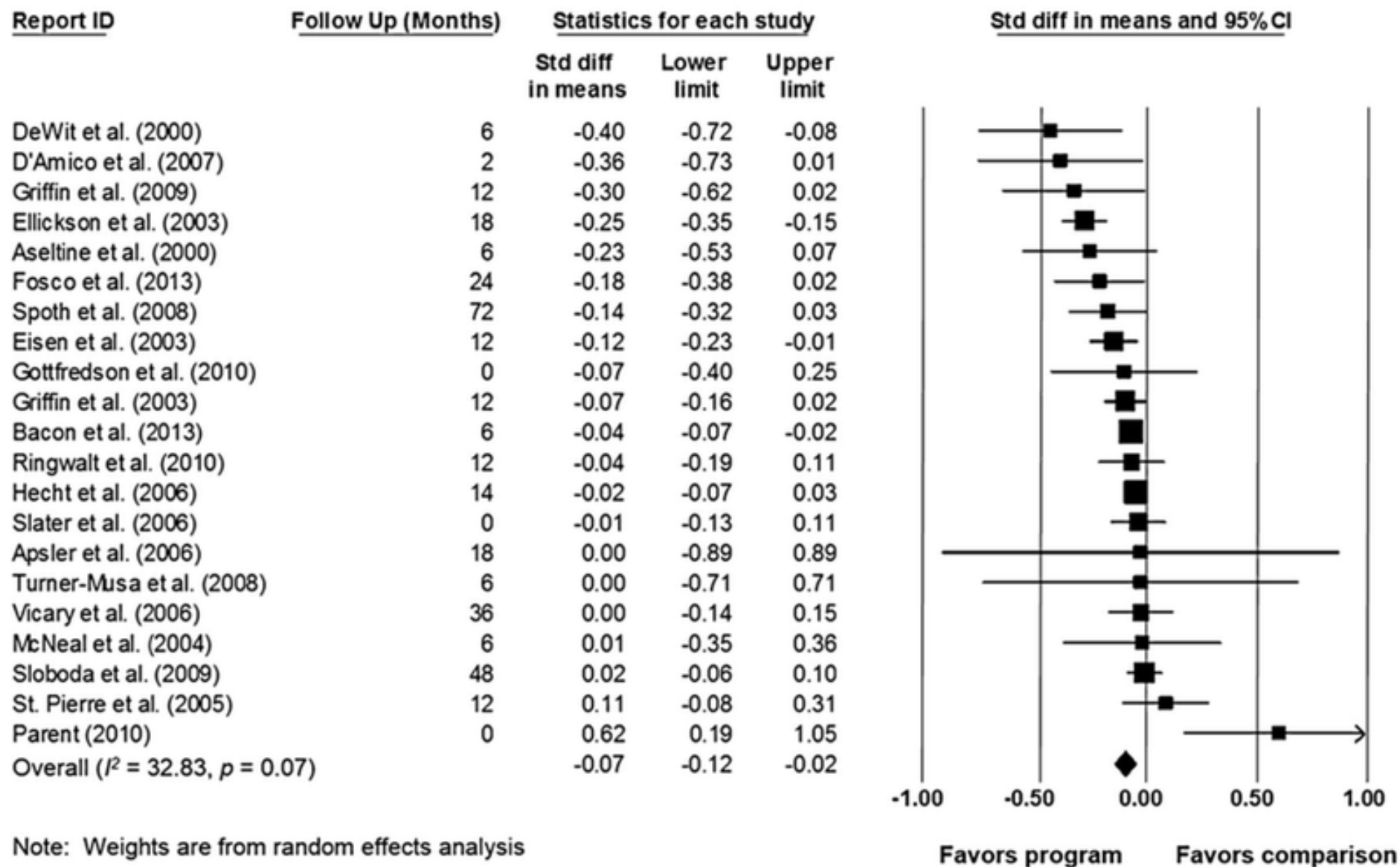
Manejo parental insuficiente (Nash et al, 2005)

**Envolvimento em relacionamentos românticos muito cedo (Squelia et al,
2017)**

**Contato com usuários de substâncias (Squelia et al, 2017). Outros
transtornos mentais (Conway et al, 2016)**

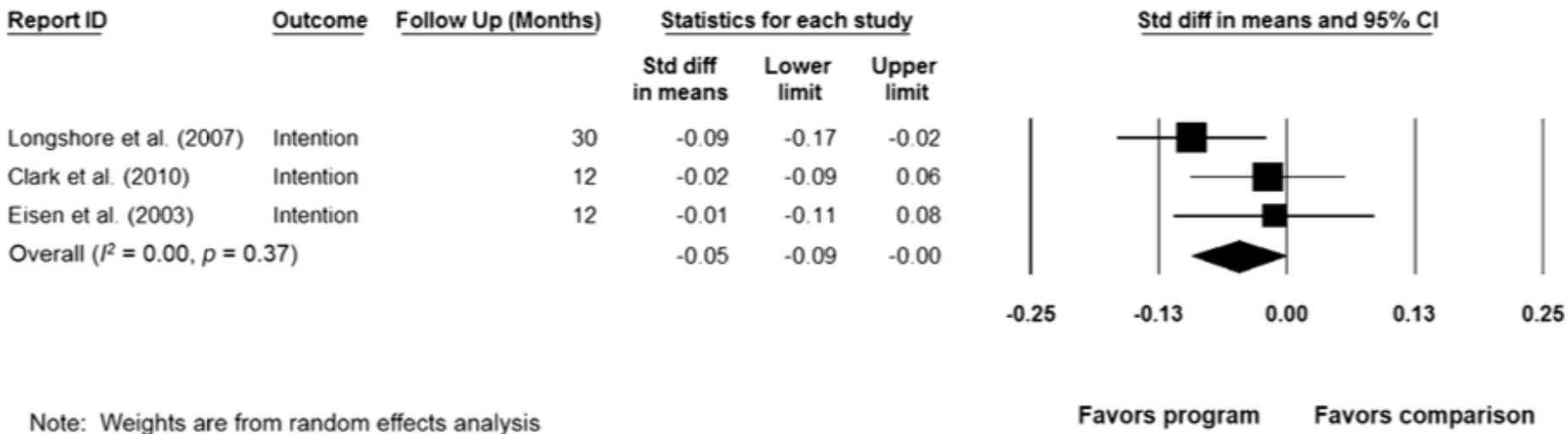
A Meta-analysis of the Effectiveness of Interactive Middle School Cannabis Prevention Programs

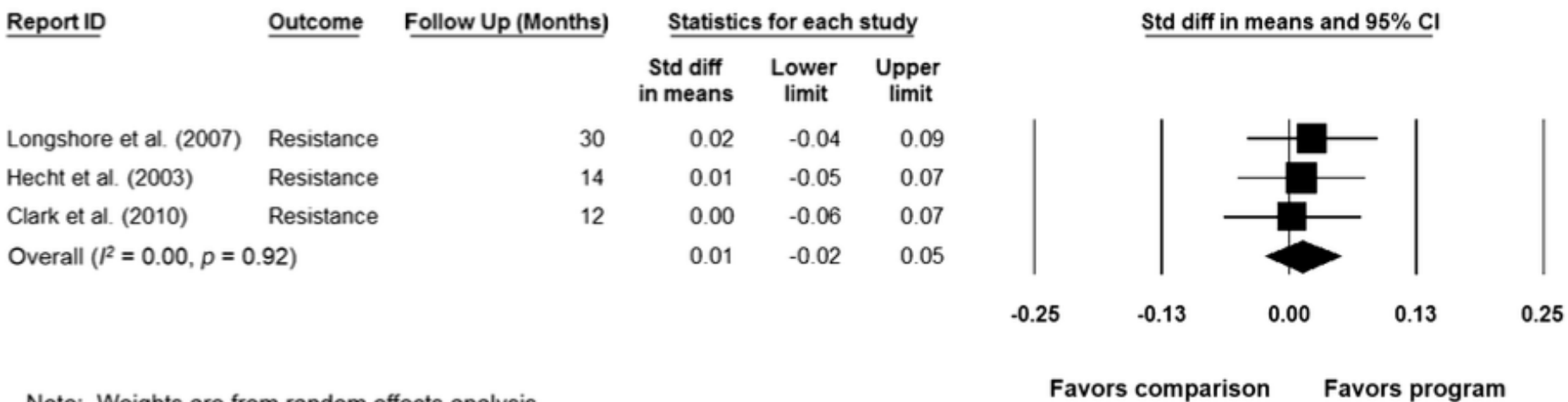
**Steven E. Lize¹ · Aidyn L. Iachini¹ · Weizhou Tang¹ · Joshua Tucker¹ · Kristen D. Seay¹ ·
Stephanie Clone¹ · Dana DeHart¹ · Teri Browne¹**



Note: Weights are from random effects analysis

Favors program Favors comparison





Note: Weights are from random effects analysis

PEDIATRICS®

OFFICIAL JOURNAL OF THE AMERICAN ACADEMY OF PEDIATRICS

Effective Parenting Interventions to Reduce Youth Substance Use: A Systematic Review

Michele L. Allen, Diego Garcia-Huidobro, Carolyn Porta, Dorothy Curran, Roma Patel, Jonathan Miller and Iris Borowsky

Pediatrics 2016;138;

DOI: 10.1542/peds.2015-4425 originally published online July 21, 2016;

Peer-led interventions to prevent tobacco, alcohol and/or drug use among young people aged 11–21 years: a systematic review and meta-analysis

Georgie J. MacArthur, Sean Harrison, Deborah M. Caldwell, Matthew Hickman & Rona Campbell

School of Social and Community Medicine, University of Bristol, Bristol, UK

Contents lists available at ScienceDirect

Clinical Psychology Review

journal homepage: www.elsevier.com/locate/clipsychrev



A component-centered meta-analysis of family-based prevention programs for adolescent substance use



Mark J. Van Ryzin ^{a,*}, Cary J. Roseth ^b, Gregory M. Fosco ^c, You-kyung Lee ^b, I-Chien Chen ^b

^a Oregon Research Institute, 1776 Millrace Drive, Eugene, OR 97403, USA

^b Michigan State University College of Education, East Lansing, MI 48824, USA

^c Pennsylvania State University College of Health and Human Development, University Park, PA 16802, USA

	β	Var at Level 2
<i>Level 1</i>		
School-based program (yes vs. no)	.14	.04
Sample size (/1000)	-.22**	.00
Age	.29	.00
Socio-economic Status (low vs. middle or mixed)	-.05	.06
<i>Level 2</i>		
Positive Family Relations (youth)	.44*	-
Problem-Solving (youth)	-.11	-
Resisting Peer Risk (parent)	-.02	-
Future Orientation (youth)	.56*	-

* $p < .05$.

** $p < .01$.

Descriptive data for program codes (minutes).

Program code	M	% Programs w/zero min
<i>1. Parental Monitoring and Behavior Management</i>		
Parent	191.33	26.8%
Youth	3.43	90.2%
Whole family	17.20	63.4%
<i>2. Fostering School Success</i>		
Parent	47.51	68.3%
Youth	3.90	95.1%
Whole family	2.34	92.7%
<i>3. Positive Family Relationships</i>		
Parent	73.24	39.0%
Youth	8.41	82.9%
Whole family	46.33	58.5%
<i>4. Substance Use Knowledge, Attitudes, and Values</i>		
Parent	47.76	46.3%
Youth	6.83	85.4%
Whole family	11.56	70.7%
<i>5. Self-Regulation and Stress Management</i>		
Parent	46.15	51.2%
Youth	39.12	82.9%
Whole family	9.57	80.5%
<i>6. Problem Solving</i>		
Parent	124.62	39.0%
Youth	42.37	80.5%
Whole family	51.41	70.7%
<i>7. Resisting Peer Risk</i>		
Parent	7.71	70.7%
Youth	15.20	82.9%
Whole family	18.00	61.0%
<i>8. Psycho-education</i>		
Parent	17.63	63.4%
<i>9. Ethnic Identity</i>		
Parent	7.33	90.2%
Youth	4.09	95.1%
Whole family	.00	100.0%
<i>10. Future Orientation</i>		
Parent	4.34	82.9%
Youth	9.61	78.0%
Whole family	10.85	85.4%
11. Other	225.41	68.3%

Obrigado.

thiagoblancopsiquiatria@gmail.com